



CANCER CARE AT THE CROSSROADS



 **NY, MARCH 17, 2017**

A One-Day International Summit on Innovation, Clinical Benefit and Cost

Meet the Sponsors



8:00am – 8:15am

Opening remarks

Setting the stage for the day



MIKE MEYER

President, Meyer Consulting



STEPHEN G. EMERSON

MD, PhD, Director, Herbert Irving
Comprehensive Cancer Center, Columbia
University Medical Center

Opening remarks

8:15am – 9:30am

Round table 1

Cancer Care through the Lens of Health Plans, Academic Centers, Pharma and Provider Groups -
What Has Happened in the last 12 months



Moderator

STEPHEN G. EMERSON

MD, PhD, Director, Herbert Irving
Comprehensive Cancer Center, Columbia
University Medical Center



Speaker

CLIFF HUDIS

MD, CEO, American Society of Clinical
Oncology (ASCO)



Speaker

JEFFREY LeBENGER

MD, Chairman & CEO, Summit Medical Group
& Summit Health Management



Speaker

MACE ROTHENBERG

MD, Senior Vice President, Clinical
Development Officer, Oncology, Pfizer
Global Product Development, Pfizer Inc



Speaker

MAUREEN SULLIVAN

Chief Strategy and Innovation Officer,
Blue Cross Blue Shield Association

Round table 1

9:35am – 11:00am

Round table 2

The Future of Cancer Treatment (Genomics, Precision Medicine and Immunotherapy)
and Genomics/Analytics Driven Decision Making



Moderator

ALEXANDER EGGERMONT

MD, PhD, Director, Gustave Roussy; Chair,
Cancer Core Europe



Speaker

RAZELLE KURZROCK

MD, PhD Senior Deputy Director, USCD
Moore's Cancer Center



Speaker

GIDEON BOSKER

MD, Co-Founder and Chief Executive Officer,
Darwin Health



Speaker

GERALD BATIST

MD, CM, Director, McGill Cancer
Research Center



Speaker

JEFFREY WEBER

MD, PhD, Deputy Director,
Laura and Isaac Perlmutter
Cancer Center,
New York University

11:00am – 12:15am

Round table 3

Innovations and Challenges Facing Diagnosis, Integrated Care,
Survivorship Programs and Palliative Care – Patient and Media Perceptions



Moderator

MIKE MEYER

President, Meyer Consulting



Speaker

FRANCES VISCO

President, National Breast
Cancer Coalition



Speaker

ALAN BRYCE

MD, Medical Director, Genomic
Oncology Clinic, Mayo Clinic Arizona



Speaker

MARY ANN CHRISTOPHER

Vice President, Clinical
Operations & Transformation,
Horizon Blue Cross Blue Shield
of New Jersey



Speaker

MICHAEL J. FISCH

MD, Medical Director of Oncology,
AIM Specialty Health; Former Chair,
Department of General Oncology, MD
Anderson Cancer Center

12:00pm – 1:15pm

Lunch served at conference center

1:15pm – 2:30pm

Round table 4

The Challenges Facing Health Plans, Providers and Governments in Financing Innovative Cancer Treatments in a Changing Health Care Policy Environment



Moderator

PETER S. FINE

President and CEO, Banner Health



Speaker

HAL PAZ

MD, Chief Medical Officer, Aetna



Speaker

INDRANIL BAGCHI

PhD, Vice President and Head,
Payer Insights and Access, Patient &
Health Impact, Pfizer Inc



Speaker

GLEN STETTIN

MD, Chief Innovation Officer &SVP –
Clinical, Research & New Solutions,
Express Scripts



Speaker

RICHARD SULLIVAN

MD, PhD, Director, Institute for Cancer Policy;
Co-Director, Conflict & Health Research
Program, King's College, London

Round table 4

2:40pm – 3:50pm

Round table 5

Cancer Care Delivery: Providing the Right Care at the Right Place at the Right Time; Lessons Learned From New Models of Care



Moderator

DR. JACQUE J. SOKOLOV

Chairman and CEO, SSB Solutions



Moderator

DAVID NANUS

MD, Chief, Division of Hematology and
Medical Oncology, Weill Cornell Medicine
and New York Presbyterian



Speaker

**JOSE FRANCISCO
TOMAS MARTINEZ**

MD, Medical Executive Director,
Sanitas/ BUPA, Spain



Speaker

RICHARD R. BARAKAT

MD, Director, Regional Care Network & Vice
Chair Regional Network and Affiliations,
Department of Surgery, Memorial Sloan
Kettering Cancer Center



Speaker

ROBERT MILLER

MD, Vice President and Medical Director,
CancerLinQ, American Society of Clinical
Oncology (ASCO)

Round table 5





INDRANIL BAGCHI

PhD, Vice President and Head, Payer Insights and Access, Global Health and Value, Pfizer

Dr. Indranil Bagchi is Vice President and Head of Payer Insights and Access at Pfizer, where he leads efforts to understand payer perspectives and develop the market access strategy for the entire Pfizer portfolio, including the payer value proposition, pricing strategy and reimbursement support across all disease areas and markets. Indranil has more than 18 years of experience in Pricing & Reimbursement, Health Economics & Outcomes Research, and Market Access across several major companies in the pharmaceutical industry. In 2014, Indranil received the 'Outstanding 50 Asian Americans in Business' award by the Asian American Business Development Center. In 2010, Indranil was recognized in Pharmaceutical Executive magazine's annual roster of Emerging Leaders, "The New Breed of Leadership." Due to his efforts in securing and expanding market access for Enbrel, Indranil was awarded the Wyeth President's Achieving Excellence Award in 2005. Indranil is a frequent speaker and contributor to forums, articles and conferences addressing issues related to access to medicines.



RICHARD R. BARAKAT

MD, MBA Director, Regional Care Network
Vice Chair, Regional Care Network and Affiliations
Department of Surgery Memorial Sloan Kettering
Cancer Center

Richard Barakat is an internationally recognized surgeon and clinical investigator who specializes in advanced robotic and laparoscopic surgery for uterine cancer and radical procedures for debulking ovarian cancer. He was Chief of the Gynecology Service at Memorial Sloan Kettering from 2001 to 2013 and currently holds the Ronald O. Perelman Chair in Gynecologic Surgery. Dr. Barakat was the lead investigator on several influential research projects at MSK, including a study to compare the benefits of laparoscopic versus standard surgery for patients with endometrial cancer, a study evaluating symptomatic lower-extremity lymphedema in women treated for uterine corpus cancer, and a study testing the efficacy of the Gynecologic Cancer Lymphedema Questionnaire in detecting lower-extremity lymphedema symptoms. He served as a member and examiner for the American Board of Obstetrics and Gynecology and was the Vice Chairman of the Cancer Prevention Committee of the Gynecologic Oncology Group for five years; he remains actively involved with cancer prevention studies on that committee. He was President of the Society of Gynecologic Oncology from 2013 to 2014 and past President of the International Gynecologic Cancer Society (2014-2016).

Dr. Barakat is author or co-author of more than 340 peer-reviewed articles and numerous textbook chapters and is also an editor of a surgical atlas on gynecologic cancer and of the latest edition of Principles and Practice of Gynecologic Oncology, one of the leading texts in the field.



GERALD BATIST

MD, CM, Director, McGill Cancer
Research Center

Dr. Gerald Batist is the former Chairman of the Department of Oncology at McGill University and Director of the McGill Centre for Translational Research in Cancer. A major award from the Canadian Foundation for Innovation led to the expansion of the Centre and its integration into the Segal Cancer Centre at the Jewish General Hospital, which he also directs.

Dr. Batist is a clinician-scientist, trained in medical oncology and molecular pharmacology. His work, both in his lab and clinical research focuses on therapeutic resistance. This includes large consortia of biopsy-based clinical trials. In 2014 he co-led a successful application that resulted in the establishment of the Canadian National Centre of Excellence in Personalized Medicine, Exactis Innovations. The core feature is a program to build a massive bio bank and database linked to a prospective longitudinal registry of cancer patients followed throughout the trajectory of their illness, a project called 'Personalize My Treatment'. In 2016, Dr Batist was made a Member of the Order of Canada.



GIDEON BOSKER

MD, Co-Founder and Chief Executive Officer, Darwin Health

Gideon Bosker, MD, the co-founder and CEO of DarwinHealth™, brings to this “precision-focused” organization the knowledge, principles, and aspirations nurtured during his 15-year career as an academic scholar and clinician. While a faculty member at the Yale University School of Medicine and Oregon Health Sciences University, Dr. Bosker authored and/or edited multiple core textbooks and journals in clinical medicine and pharmacotherapeutics.

Under his direction over the past 10 years, as Founder and CEO of CMEducation Resources, this globally-focused company has produced award-winning, live and digitally-based independent medical education programming in the fields of clinical oncology, biologics-based therapy, genomics-driven precision cancer medicine, diabetes, thrombosis, neurodegenerative disease, obesity, cardiovascular disease, medical diagnostics, genetic screening, and metabolic disorders. These multi-platform initiatives, deploying proprietary technologies and reaching tens of thousands of physicians worldwide, have been implemented under the sponsorship of leading biopharmaceutical and diagnostics companies, including Bayer Healthcare, Pfizer, Bristol Myers Squibb, Genentech, Roche, Daiichi Sankyo, Ipsen, Novo Nordisk, Astra Zeneca, Eisai, Sanofi, Regeneron, Amgen, Genzyme, Natera, Teva, and Quest.

His leadership roles at both DarwinHealth™ and CMEducation have been instrumental in galvanizing an international network of the world’s leading scientists, clinical investigators, strategists, and industry leaders who share a commitment for advancing the frontiers and foundations of cancer medicine — as well as other critical disease states with unmet therapeutic needs — based on scientifically rigorous and innovative discoveries and technologies.



ALAN BRYCE

MD, Medical Director, Genomic Oncology Clinic, Mayo Clinic Arizona

Dr. Bryce studies cancer genetics and novel therapeutics with a focus on personalized medicine. His clinical practice centers on genitourinary malignancies (prostate, kidney, bladder, and testicular cancers) and melanoma.

He is the Medical Director of the Genomic Oncology Clinic at Mayo Clinic Arizona where he utilizes whole genome sequencing of tumors to identify key driver mutations. This approach allows for precise targeting of a patient’s tumor, leading to a greater chance of remission. In addition, Dr. Bryce participates in community outreach to underserved populations and has an interest in health disparities research. He also conducts Phase I clinical trials of new cancer drugs. His areas of focus include personalized medicine, the application of genomics to prostate cancer and melanoma, and Phase I trials.

Dr. Bryce’s research centers on understanding the genetic mutations of individual cancer cells in order to allow for a precise, targeted treatment strategy. The ultimate goal is for every patient to have their tumor biopsied and sequenced, resulting in a personalized treatment plan.



MARY ANN CHRISTOPHER

MSN, Vice President, Clinical Operations & Transformation, Horizon Blue Cross Blue Shield of New Jersey

Ms. Christopher has a distinguished record of health care innovation and transformation. She serves as Vice President, Clinical Operations & Transformation at Horizon Blue Cross Blue Shield of New Jersey. She is responsible for leading clinical operations, behavioral health and medical management transformation, and overseeing the population health strategy through value-based partnerships. She is leading investigational studies in precision medicine, developing specialized oncology medical home models and facilitating care delivery transformation in palliative care.

Ms. Christopher serves as a Congressional Appointee of the National Advisory Council of Nursing Education and Practice for the U.S. Department of Health and Human Services.

Ms. Christopher has received numerous awards and recognitions, including NJBiz Top 50 Health Care Leaders, Top 50 Women in Business and the American Nurses Association Honorary Human Rights Award.

Ms. Christopher is a Fellow of the American Academy of Nursing, New York Academy of Medicine, Public Health Leadership Institute of Centers for Disease Control and Prevention and the Wharton Nurse Executive Program. She has held faculty appointments at Columbia University, New York University, Rutgers University and Seton Hall University.

Ms. Christopher obtained her BSN from Fairfield University and her MSN from Seton Hall University. Awarded honorary doctoral degrees from Fairfield University and Monmouth University, she has lectured internationally and published extensively.



ALEXANDER EGGERMONT

MD, PhD, Director General, Gustave Roussy;
Chairman, Cancer Core Europe

Full Professor of Oncology (2012-20) (Classe Exceptionnelle) at the Paris-Sud University in Paris, France. Full Professor of Surgical Oncology (2003-2016) as well as Endowed Professor of International Networking in Cancer Research (2011-2020) at Erasmus University MC Rotterdam. He holds the Joseph Maisin Chair in Oncology at Catholic University of Louvain in Belgium. PhD in tumor immunology at Erasmus University Rotterdam (1987) and is a Fellow of the NCI Surgery Branch, USA

Specialities: His clinical specialties include immunotherapy, melanoma, sarcoma and regional therapy techniques as well as general drug development. He is a past Chair of the EORTC Melanoma Group and current Chair of the Adjuvant Therapy Committee EORTC MG. His basic research experience is in tumor immunology, advanced in vivo imaging models and tumor pathophysiology.

Scientific Output: is the author or co-author of > 700 peer-reviewed publications, book chapters and monographs. More than 35 PhD theses have originated in his clinical, translational and basic research programs at the Erasmus University MC Rotterdam.
H-Index: 69; >23000 citations

International functions

- European Academy of Cancer Sciences: President, 2010-2016
- Cancer Core Europe President – 2014-2017
- ECCO: Past President
- EORTC: Past President
- ASCO: Past Board Member (Surgery Chair) and JCO Editorial Board
- AACR: Past Deputy Editor of Clinical Cancer Research
- Deutsche Krebshilfe: Chair International Jury for Comprehensive Cancer Centers Program
- FNCLCC: Vice President French Federation of Cancer Centers
- European Journal of Cancer: Editor-in-Chief since 2011

Societal Awards:

- Presidential Medical, Kazakhstan (2014)
- Legion d'Honneur, France (2015)



STEPHEN G. EMERSON

MD, PhD, Director, Herbert Irving Comprehensive Cancer Center; Clyde and Helen Wu Professor in Immunology, Columbia University College of Physicians and Surgeons; Associate Dean for Oncology at CUMC; and Director of Oncology Services for New York-Presbyterian Hospital.

Dr. Emerson graduated Haverford College and went on to Yale University, where he received a Master of Science degree in molecular biophysics, a Ph.D. in cell biology and immunology, and his medical degree. He served on the faculties of the University of Michigan and Harvard University before joining the University of Pennsylvania in 1994. Dr. Emerson is a renowned investigator in bone marrow stem cell biology who has been recognized with several awards, including the Stohman Award of the Leukemia and Lymphoma Society, the Medical Scientist Trainee Prize of Yale University, the Wilbur Cross Medal from Yale University, its highest honor for its Ph.D. graduates, and the Bai-Yu Lan Prize of the City of Shanghai, the Rolex Career Achievement Award, and most recently elected a Knight of the French Legion of Honor.

He has been actively involved with grant review and scientific program review at the National Institutes of Health and National Science Foundation. He sat on the leadership councils of the American Society of Hematology and the American Society for Blood and Marrow Transplantation, serving as Scientific Program Director for the annual meetings of each. He was a member of the Journal of Experimental Medicine and Blood Editorial Board and served as Senior Editor of the Journal of Clinical Investigation. In the laboratory, Dr. Emerson performs research in bone marrow stem cell biology, particularly as applied to bone marrow stem cell transplantation. Researchers in his laboratory have made discoveries that have led to new medical therapies used worldwide.



PETER S. FINE

President and CEO, Banner Health

Peter Fine was appointed President and CEO of Phoenix, Arizona based Banner Health in November 2000. Prior to his appointment, he was EVP and COO of Milwaukee, Wisconsin based Aurora Health Care. Before joining Aurora, Mr. Fine served in several hospital leadership positions, including President and CEO of Grant Hospital and SVP of Operations at Northwestern Memorial Hospital, both in Chicago, and Assistant Administrator of Porter Memorial Hospital in Valparaiso, Indiana.

Mr. Fine received his bachelor's degree from Ohio University and his master's degree in healthcare administration from George Washington University. He is a fellow in the American College of Healthcare Executives and previously served as a member of their Board of Governors. He is also a member of the American Hospital Association, Health Management Academy, Greater Phoenix Leadership, Governor's Transformation Advisory Committee, and serves on the board of directors for Premier, Inc., and the Banner Health Board of Directors; previously served on the boards of Accuray, Translational Genomics Research Institute, and the Heard Museum and had a prior term of service on the Board of Directors for Premier Inc.

A number of prestigious organizations have honored Mr. Fine including, Modern Healthcare with the 100 Most Influential People in Healthcare Award (2011, 2014, 2015), Modern Healthcare and Healthcare Information and Management Systems Society with the 2010 CEO IT Achievement Award, Phoenix Business Journal's Most Admired CEO Award 2010, and many others.



MICHAEL J. FISCH

MD, Medical Director of Oncology,
AIM Specialty Health; Former Chair, Department of General
Oncology, MD Anderson Cancer Center

Dr. Fisch is an experienced internist who is subspecialty board certified in medical oncology and palliative care in addition to internal medicine. He has been elected as a fellow of ASCO, the AAHPM, and the ACP. Before coming to AIM Specialty Health 2 years ago, he was Professor and Chair of the Department of General Oncology at MD Anderson Cancer Center in Houston, Texas. He maintains clinical practice with MD Anderson, seeing oncology outpatients in Houston on Fridays. Dr. Fisch has received teaching awards and published 80 peer-reviewed papers, along with 17 book chapters. He has co-edited 4 multi-authored books related to palliative care and oncology. He served as the Chair for the inaugural ASCO Palliative Care in Oncology Symposium in October of 2014. In addition, he served as Co-Chair of the National Cancer Institute's Symptom Management and Quality of Life Committee from 2007-2014, and received the NCI Director's Award for his service in this role. He is currently Co-Chair of the SWOG Symptom Control and Quality of Life committee.

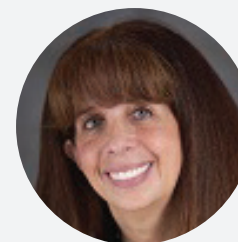


CLIFF HUDIS

MD, CEO, American Society of Clinical Oncology (ASCO)

Dr. Hudis is the CEO of the American Society of Clinical Oncology, the largest professional society in the world dedicated to education, research, and quality of care for patients with cancer. Among many other current initiatives, ASCO is developing CancerLinQ, a not-for-profit subsidiary that will organize real world big data to provide into usable knowledge, personalized for individual patients.

Before his move to ASCO, Dr. Hudis served for nearly two decades as the Chief of the Breast Medicine Service and Attending Physician at Memorial Sloan Kettering Cancer Center (MSKCC) in New York City where he was also a Professor of Medicine at the Weill Medical College of Cornell University. He was co-chair of the Breast Committee of the Alliance for Clinical Trials in Oncology (formerly Cancer and Leukemia Group), Chair of the Scientific Advisory Committee of the Breast Cancer Research Foundation, and a former Associate Editor of the Journal of Clinical Oncology. He also served as MSKCC's Vice President for Government Relations and Chief Advocacy Officer and he continues to maintain a limited clinical practice at that institution.



RAZELLE KURZROCK

MD, PhD, Senior Deputy Center Director, Clinical Science;
Director, Clinical Trials Office; Director, Center for Personalized
Cancer Therapy; Chief, Division of Hematology and Oncology
Leader, Experimental Therapeutics Program; Murray Professor
of Medicine, UC San Diego Health

Dr. Razelle Kurzrock is known for developing the largest Phase 1 clinical trials department in the nation/world while at the MD Anderson. A central theme of that program was the personalized medicine strategy, embodied in a protocol called PREDICT for Profile-related Evidence Determining Individualized Cancer Therapy. This approach utilized advanced molecular technologies to match patients with targeted cancer treatment that is more likely to work for their individual tumors.

At Moores Cancer Center, Dr. Kurzrock's charge is broad, including not just growing and innovating the center's clinical trials program, but also heading its newly established Center for Personalized Cancer Therapy. Dr. Kurzrock is also Chief of the Division of Hematology and Oncology in the UC San Diego School of Medicine. Dr. Kurzrock received her MD degree from the University of Toronto and has over 600 peer-reviewed publications and a uniquely strong record of competitive grant funding within the setting of Phase I program building. Dr. Kurzrock also has a strong history of building outstanding education/training programs at MDACC and at the UCSD Moores Cancer.

Dr. Kurzrock has four children and lives with her husband, Dr. Philip Cohen, a dermatologist, in San Diego, CA



JEFFREY LEBENGER

MD, Chairman and CEO, Summit Medical Group

Jeffrey Le Benger, MD, is Chairman & CEO of Summit Medical Group (SMG) and Summit Health Management (SHM) in Berkeley Heights, New Jersey. Founded in 1929, SMG is the largest and oldest physician-owned multispecialty medical practice in the New York/New Jersey metropolitan area and among the largest in the nation. Under Dr. Le Benger's leadership in 2014, SMG also created SHM, a management services company with a focus on population health management.

In 2014, Dr. Le Benger spearheaded a new relationship between SMG and MD Anderson Cancer Center to develop a new outpatient cancer center. The relationship is the first of its kind between the world-class cancer provider and a physician-owned multispecialty medical group. Dr. Le Benger earned his medical degree from New York Medical College. He did his residency training at Mount Sinai Medical Center and he is board certified in otolaryngology, head and neck surgery, and facial plastic and reconstructive surgery.



ROBERT MILLER

MD, Vice President and Medical Director, CancerLinQ, American Society of Clinical Oncology (ASCO)

Robert S. Miller, MD, FACP, FASCO is a medical oncologist and informaticist who serves as Vice President and Medical Director for CancerLinQ, a rapid learning system for oncology developed by the American Society of Clinical Oncology (ASCO). He provides medical oversight and clinical input for all aspects of CancerLinQ development and operations, as well as primary staff support for the CancerLinQ physician committees. From 2014-2016, he was ASCO Vice President for Quality and Guidelines, responsible for clinical practice guidelines, performance measurement, the Quality Oncology Practice Initiative, and quality informatics.



DAVID NANUS

MD, Chief, Hematology/ Medical Oncology, NewYork-Presbyterian/ Weill Cornell; Associate Director, Meyer Cancer Center, Weill Cornell Medicine

Dr. Nanus is an internationally recognized leader in the treatment and care of patients with genitourinary (GU) cancers, including cancers of the prostate, kidney, bladder and testes. He is actively involved in clinical, translational and basic research in GU malignancies, serving as principle or co-investigator on a variety of clinical research trials that incorporate novel targeted therapies for his patients. Since 2004, Dr. Nanus who is The Mark W. Pasmantier Professor of Hematology and Oncology in Medicine, has served as Chief of the Division of Hematology and Medical Oncology at Weill Cornell Medical College.

Dr. Nanus is also Associate Director of Clinical Services for the Cancer Center. He is the recipient of numerous awards including membership in the American Society for Clinical Investigation and the American Association of Physicians. Dr. Nanus is a graduate of the University of Illinois and the Chicago Medical School. After completing clinical training in Medicine at Albert Einstein and Medical Oncology at MSKCC, and research training at the Sloan Kettering Institute, he was invited to join the faculty at MSKCC in 1989. Developing a program in GU cancer, he made several important contributions to clinical and basic research in kidney and prostate cancer. He was recruited to the full-time faculty of Weill Cornell Medical College in 1998. As a Director of the Genitourinary Oncology Research Laboratory, he works with a unique interdepartmental team of world class clinical researchers seeking to translate research on the molecular basis of GU cancers into improved cancer treatment.



HAL PAZ

MD, Chief Medical Officer, Aetna

Dr. Harold L. Paz, MD, MS is executive vice president and chief medical officer for Aetna. He leads clinical strategy and policy at the intersection of all of Aetna's domestic and global businesses. He is responsible for driving clinical innovation to improve patient experience, quality and cost in all areas of the health care delivery system. Before joining Aetna in 2014, Dr. Paz served as chief executive officer of Penn State Hershey Medical Center and Health System, senior vice president for Health Affairs for Penn State University, dean of its College of Medicine and professor of medicine and public health sciences for eight years. Prior to his appointment to Penn State, he spent 11 years as dean of the Robert Wood Johnson Medical School and chief executive officer of Robert Wood Johnson University Medical Group, the largest multispecialty group practice in New Jersey where he was professor of medicine. His vision for health care transformation at Penn State led to the formation of an integrated healthcare system of four hospitals, 64 ambulatory care practices and 18 affiliated hospitals focused on population health across central Pennsylvania. Dr. Paz has focused his research and teaching on clinical outcomes, health system organization, and health care effectiveness.



MACE ROTHENBERG

MD, Senior Vice President, Clinical Development Officer, Oncology, Pfizer Global Product Development, Pfizer Inc

At Pfizer, Dr. Rothenberg's key responsibilities include membership on the leadership teams for Global Product Development and Pfizer Oncology and membership on Pfizer's Senior Leadership Council. Outside of his responsibilities at Pfizer, Dr. Rothenberg co-chairs the Life Sciences Consortium of the CEO Roundtable on Cancer, is a member of the National Cancer Policy Forum of the National Academy of Medicine, and serves on the NYU School of Medicine Alumni Board of Governors.

Dr. Rothenberg came to Pfizer in 2008 after 25 years in academia where he focused on early-stage drug development, clinical trial design, and the coordinated laboratory-clinical evaluation of new therapies for gastrointestinal cancers. While in academia, Dr. Rothenberg was involved with pivotal clinical trials that led to FDA approval of irinotecan (CPT-11, Camptosar®) in 1996, oxaliplatin (Eloxatin®) in 2002, and Gemzar® in 1996. At Pfizer, Dr. Rothenberg led the successful development of 4 new cancer drugs that received FDA approval within a 5 year span: crizotinib (Xalkori®) in 2011, axitinib (Inlyta®) in 2012, bosutinib (Bosulif®) in 2012, and palbociclib (Ibrance®) in 2015.

Dr. Rothenberg is the recipient of the American Cancer Society's Lane W. Adams Quality of Life Award and the American Society of Clinical Oncology's Statesman Award. He is a Fellow of the American College of Physicians and ASCO.

Dr. Rothenberg received his BA magna cum laude from the University of Pennsylvania in 1978 and his MD from the New York University School of Medicine in 1982.



JACQUE SOKOLOV

MD, Chairman and CEO, SSB Solutions

Jacque J. Sokolov, M.D. is chairman and chief executive officer of SSB Solutions, Inc., a US based, diversified healthcare management, development and financial services company currently operating in over 20 states. Following his formal training as an academic cardiologist, Dr. Sokolov has had the opportunity to serve as board director, corporate officer and advisor, in multiple healthcare sectors.

He started his career as Vice President for Healthcare and Chief Medical Officer for Southern California Edison Corporation (NYSE:EIX). Dr. Sokolov currently serves or has served in multiple board capacities for Public/Private Companies including Hospira (NYSE:HSP), MedCath (NASDAQ:MDTH), PhyAmerica (NYSE:ERDR) GlobalMed, SMG Holdings; and Non Profit Organizations including Phoenix Children's Hospital, The National Health Foundation, the American College of Medical Quality, and White House Health Project.

Dr. Sokolov received his BA and MD Degree from the University of Southern California. He completed his internal medicine residency at the Mayo Graduate School of Medicine and his fellowship in cardiovascular diseases from the University of Texas-Southwestern Medical School. He previously held and currently holds academic appointments and advisory board responsibilities in the Schools of Medicine, Business and Public Health at Harvard, the Massachusetts Institute of Technology, the University of Pennsylvania, the University of California, Los Angeles, and the University of Southern California.



GLEN STETTIN

MD, Chief Innovation Officer & Senior Vice President - Clinical, Research & New Solutions

Dr. Stettin leads Express Scripts' development of solutions that help employers and other health-plan sponsors to reduce costs while improving members' health outcomes. His responsibilities include research, analytics, reporting, formulary and trend management, as well as clinical product development including Consumerology® and specialized care through Express Scripts' Therapeutic Resource Centers®.

A board-certified physician and business leader, Glen has a passion for innovation and evidence-based, data-driven healthcare. He previously served as chief medical officer at Medco; and has practiced internal medicine and emergency medicine in New Jersey and California. He completed his residency in internal medicine and fellowship training at the University of California, San Francisco, where he also served as Medical Chief Resident at Moffitt Hospital, and as a Robert Wood Johnson Clinical Scholar.



MAUREEN SULLIVAN

Chief Strategy and Innovation Officer, Blue Cross Blue Shield Association (BCBSA)

Maureen Sullivan has overall accountability for BCBSA's strategy, brand, marketing, business and program development, research, strategic communications and educational programs. In this capacity, she leads several teams in providing wide-ranging services and strategic counsel to BCBSA leadership and BCBS Plans.

Among the critical thought leadership initiatives Maureen Sullivan drives on behalf of the BCBS System are efforts to effectively leverage BCBS data to bring new insights to healthcare. This suite of programs includes the Blue Cross Blue Shield Health Index, a first-of-its-kind measure of community and national health; the Health of America report series, which highlights data-driven information on timely health topics; and the Alliance for Health Research, a partnership with leading academic institutions.

Maureen Sullivan also supports BCBS companies in their efforts to transition care delivery to become more patient-focused and to succeed in all lines of business in an increasingly consumer-driven market. Her strategic guidance spans development of innovative solutions within BCBSA and across the BCBS System, as well as multiple initiatives to further strengthen the BCBS brand across all lines of business, from individual consumers to large national employers.

Maureen Sullivan earned a master's degree in public policy from the John F. Kennedy School of Government at Harvard University where she was a Kennedy Fellow. She also holds a bachelor's degree with honors from Albertus Magnus College in New Haven, Connecticut.



RICHARD SULLIVAN

MD, PhD, Director, Institute for Cancer Policy; Co-Director, Conflict & Health Research Program, King's College, London

Richard Sullivan is Professor of Cancer & Global Health at Kings College London, Director, Institute of Cancer Policy and Co-Director of King's Conflict & Health Research Group. Richard is on the executive board of King's Health Partners Comprehensive Cancer Centre, the Kings' Centre for Global Health and the Union for International Cancer Control. He has been appointed a Fellow of the European Academy of Cancer Sciences and WHO Expert on NCD. Richard is past UK Director of the Council for Emerging National Security Affairs (CENSA) a national security think-tank where he specialised in biological weapons counter-proliferation, and the security implications of global health. Richard qualified in medicine, and trained in surgery (urology) gaining his PhD from University College London. He was clinical director of Cancer Research UK for nearly ten years. He has led programs for the UN, OSCE and other organisations in global health and post conflict health reconstruction in many parts of the world, most recently Syria and Afghanistan. His most recent work has been focused on the Afghan basic package of health services, polio eradication and insecurity in Pakistan, and use of health intelligence in high security disease outbreaks following his work during the recent West African ebola outbreak. His personal research interests range from global cancer systems, particularly issues of affordability, through to conflict and health and surgical models of care in resource constrained environments. Richard has led over five major Lancet Commissions on global cancer, most recently Global Cancer Surgery and is currently working on the Lancet Commission for Pathology.



JOSE FRANCISCO TOMAS MARTINEZ

MD, Medical Executive Director,
Sanitas/ BUPA, Spain

Dr. Tomas obtained his medical degree at the University of Salamanca in 1985, as well as his board certification in Hematology and a PhD in 1990. His area of clinical expertise is in stem cell transplantation and lymphoid malignancies. He completed his fellowship training at the University of Nebraska Medical Center in Omaha in 1991, and at Fred Hutchinson Cancer Research Center in 1994. He has worked at the the Department of Hematology of the HU La Princesa de Madrid and was the Director of the Department of Hematology and Clinical Research of the Fundacion Jimenez Diaz at the Autonomy University in Madrid from 1998-2004. In January 2005 he joined the MD Anderson Cancer Center project in Madrid and has been Director of the Departments of Hematology and Clinical Laboratories and Medical Director until January 2014. In February 2014 he became the Executive Medical Director of Bupa-SLA and Adjunct Professor at the University of Texas (Division of Cancer Medicine, Department of Lymphoma and Myeloma). He belongs to multiple scientific societies, including the European Blood and Bone Marrow Transplant Group, ASH, ASCO and EHA and has published more than 150 papers in international medical journals.



FRANCES M. VISCO

JD, President, National Breast Cancer Coalition

In 1991, Fran Visco gave up her partnership in a Philadelphia law firm to become the first and only President of the National Breast Cancer Coalition (NBCC) and a member of its Board of Directors. Science magazine described Fran as "may be the most influential nonscientist ever in the field of breast cancer research." Appointed by President Clinton, Fran served three terms as one of three members of the President's Cancer Panel; she was the first consumer to chair the Integration Panel of the Department of Defense Peer-Reviewed Breast Cancer Research Program; and she co-chaired the National Action Plan on Breast Cancer and served on the National Cancer Policy Board.

Fran is a member of the Board of Directors of Translational Research in Oncology, an international non-profit clinical trials consortium. She has received numerous awards for her breast cancer work, including several honorary doctorates, a Glamour Woman of the Year designation and the Lucretia Mott Award from Women's Way. Fran speaks on the science of breast cancer and women's health advocacy issues throughout the country and internationally and appears frequently on national television and in the press discussing women's health issues, most recently as the only patient advocate in Ken Burn's documentary, "Cancer: The Emperor of All Maladies" on PBS. She has testified before various congressional committees and panels. Fran is a 28-year breast cancer survivor. She resides in Philadelphia.



JEFFREY S. WEBER

MD, PhD, Deputy Director, Laura and Isaac Perlmutter
Cancer Center, New York University

Dr. Weber is the Deputy Director of the Laura and Isaac Perlmutter Cancer Center, Head of Experimental Therapeutics as well as Professor of Medicine at the NYU-Langone Medical Center in New York City. His research interests lie in the monitoring and characterization of T cell responses to immunotherapeutic treatments in cancer patients, and in the establishment of in vitro models to facilitate the understanding of how immune modulating antibodies amplify T cell responses in patients. He is also interested in the mechanisms by which achieving autoimmunity induces regression of cancer. His clinical interests are in the immunotherapy of melanoma and other malignancies, with a focus on adoptive immunotherapy, epigenetic therapy and the use of immune modulating antibodies.



Meyer Consulting is an international health care consulting and recruiting firm that brings leading experts together in collaborative settings to build better health care solutions.



MEYER CONSULTING

Phone (406) 531.5505

Fax (480) 614.5660

Website www.meyerconsultinginc.com

CORPORATE OFFICE

Meyer Consulting, LLC

5665 N. Scottsdale Road, Suite 110

Scottsdale, AZ 85250